



# Blitzwolf BW-YPC110 Split Wi-Fi Endoscope with 1200P HD Resolution User Manual

[Home](#) » [Blitzwolf](#) » Blitzwolf BW-YPC110 Split Wi-Fi Endoscope with 1200P HD Resolution User Manual

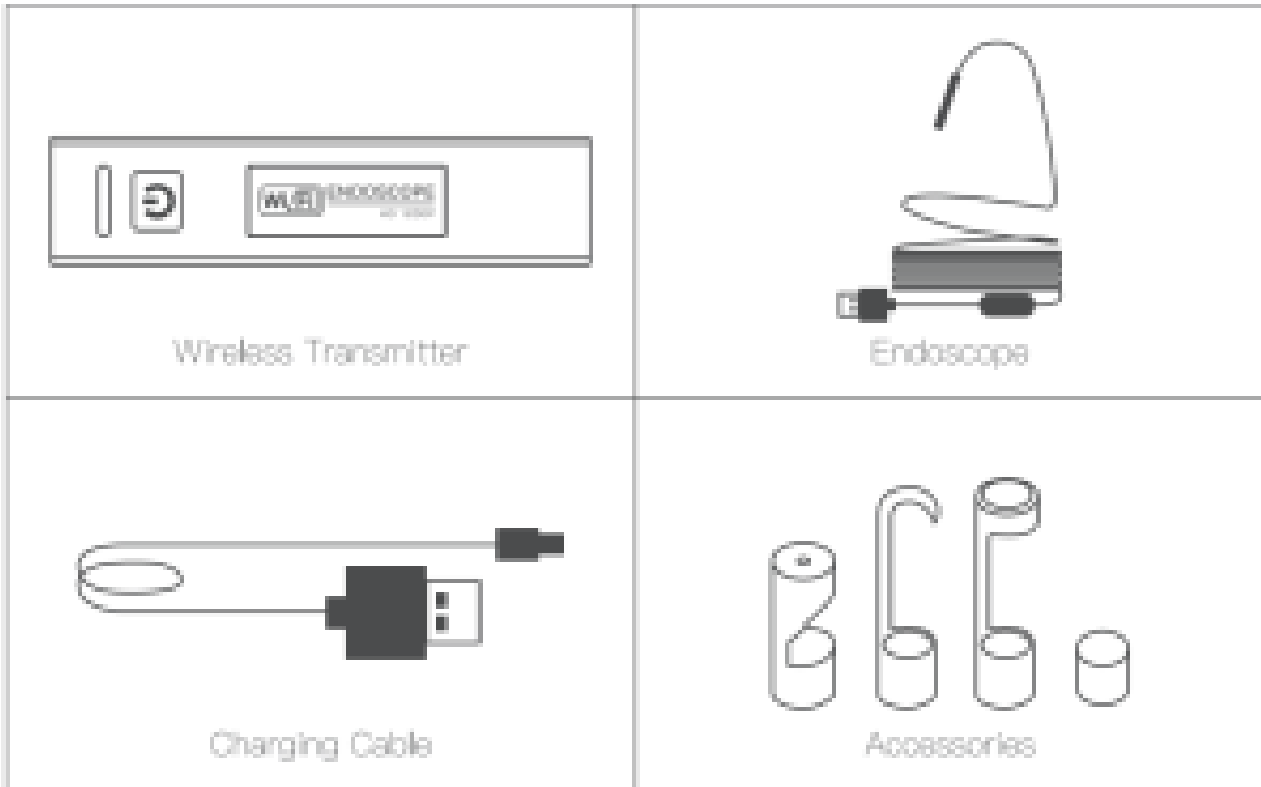
# Blitzwolf

User Manual  
BW-YPC110

## Contents [ [hide](#) ]

- [1 What's in the box](#)
- [2 Product structure](#)
- [3 How to use](#)
- [4 Matters needing attention](#)
- [5 Documents / Resources](#)
- [6 Related Posts](#)

## What's in the box



## Product structure



1. Power switch	3. Charging in
2. Charging switch	4. Input camera

## How to use

### PC

Insert the ENDoscope USS port directly into the computer. If the computer does not have a driver installed, you need to install the driver.

108: please use Photo Booth, QuickTimePlayer and VideoLanClient

Windows system: if it cannot be started, you need to download and use it at [www.kkmoom.com/pc.rar](http://www.kkmoom.com/pc.rar).

### Mobile terminal

First you need to download the in seam APP on your mobile device.

IOS: You need to search for "in seam" in the APP Store, or scan the QR code below to download.

Android: Search "In seam" on Google Play, or scan the QR code below to download it



After the successful installation of the downloaded APP, insert the endoscope into the wireless transmitter and hold the switch for 3 seconds, the green indicator light will flash (AP hotspot has been turned on). At this time, open the Settings of the mobile device, search for the WIFI name inskam\_XXXX and connect.

After successful connection, open the INSKAM APP to view real-time images and perform video recording, photo capture, and other operations according to App prompts.

- If you are unable to view pictures or videos in the phone album, please go to the phone settings to allow the inseam application to access the phone album.
- Accessories can be rotated and screwed into the front of the endoscope as required to achieve different visual effects and auxiliary functions.
- The knob located near the 0SB port is the LED brightness regulator, which can be adjusted according to the user's needs.

### Matters needing attention

- The whole device needs to pay attention to moisture, and store the product in a dry place. These measures reduce the risk of electrical shocks and damage. When this device is fully assembled, the lens and hose are waterproof, but the wireless transmitter is not. Please use it carefully
- If there is condensed water in the lens, do not use the camera. Let the water evaporate before use.
- Please use the 5V output power adapter for charging
- Handle the battery properly. A high temperature may cause the battery to explode. Do not put the battery on free. Some countries have regulations on battery handling. Please comply with all applicable regulations



Company: Lotus NL B.V.

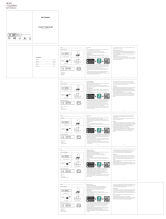
Address: Koningin Julianaplein 10, 1 e Verd, 2595AA, The Hague, Netherlands.

E-mail: [peter@lotusnl.com](mailto:peter@lotusnl.com)

Tel: +31644168999



### Documents / Resources



[BLITZWOIF BW-YPC110 Split Wi-Fi Endoscope with 1200P HD Resolution](#) [pdf] User Manual  
al  
BW-YPC110, Split Wi-Fi Endoscope with 1200P HD Resolution